



# DPLK Generali Money Market Bravo

December 2025

## MONEY MARKET UNIT LINK

### ABOUT GENERALI GROUP

Generali Group is one of the largest integrated insurance and asset management groups worldwide. Established in 1831, it is present in over 50 countries in the world, with a total premium income of € 95.2 billion and € 863 billion AUM in 2024. With around 87,000 employees serving 71 million customers, the Group has a leading position in Europe and a growing presence in Asia and Latin America. At the heart of Generali's strategy is its Lifetime Partner commitment to customers, achieved through innovative and personalised solutions, best-in-class customer experience and its digitalised global distribution capabilities. The Group has fully embedded sustainability into all strategic choices, with the aim to create value for all stakeholders while building a fairer and more

### ABOUT GENERALI INDONESIA

DPLK Generali Indonesia (Generali Indonesia) is part of the Generali Group operating in Indonesia since 2008 and developing its insurance business through multiple distribution channels, including agency, bancassurance, and corporate solutions. Aligned with the vision to become a Lifetime Partner for customers, Generali Indonesia offers innovative product solutions for life protection, health, critical illness, and retirement planning for individual and corporate customers.

Currently, Generali Indonesia is supported by thousands of professional agents and is trusted to protect more than 400,000 customers in Indonesia. DPLK Generali Indonesia is licensed and supervised by the Financial Services Authority (OJK).

### INVESTMENT OBJECTIVE

To preserve capital and to generate an attractive return in the short-term through a selective diversification of money market instruments

### RISK CATEGORY

Low

### PORTFOLIO ALLOCATION DETAILS

Money Market and Cash	100%
Fixed Income	0%

### TOP HOLDING (In Alhpabetical Order)

Bank BTPN Tbk, PT  
Bank Pan Indonesia Tbk, PT  
Bank Pembangunan Daerah Jawa Barat Dan Banten Tbk, PT  
Bank Rakyat Indonesia (Persero) Tbk, PT  
Bank Tabungan Negara (Persero) Tbk, PT

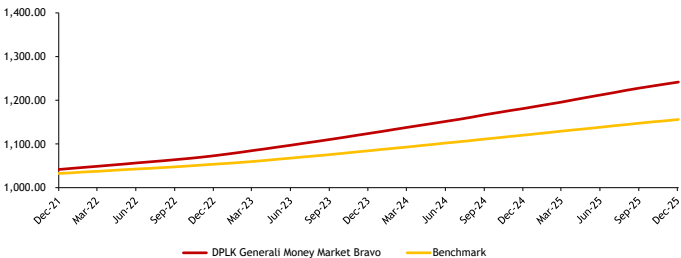
### SECTOR ALLOCATION

Time Deposit 100%

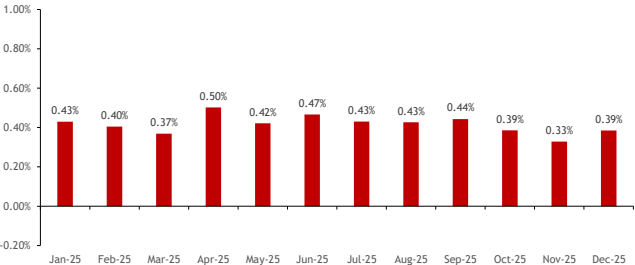
UNIT PRICE	1,242
------------	-------

\*No related Parties

DPLK Generali Money Market Bravo vs Benchmark



Monthly Return



INVESTMENT RETURN	1-Month	3-Month	6-Month	YTD	1-Year	3-Year	5-Year	Since Inception
DPLK Generali Money Market Bravo	0.39%	1.10%	2.42%	5.11%	5.11%	15.71%	23.48%	24.16%
Benchmark*	0.26%	0.73%	1.53%	3.18%	3.18%	9.71%	14.61%	15.60%

\*Bank Indonesia Deposit Rate Avg 1 Month

(Benchmark before Feb 2023: Average 1 Month Deposit of Bank Mandiri, Deutsche Bank and ANZ)

### Market Commentary

DPLK Generali Money Market Bravo recorded a performance of 0.39% in December 2025. In December 2025, Indonesia's money market remained liquid and accommodative, supported by stable domestic macroeconomic conditions and an ongoing accommodative monetary stance. Bank Indonesia maintained the BI-Rate at 4.75%, keeping short-term interest rates low and stable. System liquidity stayed ample, underpinned by controlled inflation, continued foreign capital inflows, and additional liquidity from maturing government bonds. On the external front, a more stable global monetary policy environment following the end of the Federal Reserve's quantitative tightening further supported global funding conditions. These combined factors helped keep interbank rates low, narrowed spreads, and maintained favorable short-term funding conditions toward the end of 2025.

### OTHER INFORMATION

Launching Date	: 2 September 2020
NAV on Launching Date	: Rp 1,000/unit
Currency	: IDR
Total AUM	: Rp12,538,055,526
Total Unit	: 10,098,106.9198 Units
Fund Manager	: Generali Indonesia
Custodian Bank	: Deutsche Bank
Valuation Method	: Daily

### DISCLAIMER :

DPLK GENERALI MONEY MARKET BRAVO IS A FUND ON UNIT-LINK PRODUCT OFFERED BY PT ASURANSI JIWA GENERALI INDONESIA. THIS REPORT HAS BEEN PREPARED BY PT ASURANSI JIWA GENERALI INDONESIA FOR INFORMATIONAL PURPOSE ONLY. THIS REPORT IS NOT A SOLICITATION TO SUBSCRIBE. ALL RELEVANT THINGS HAS BEEN CONSIDERED TO MAKE SURE THE REPORT IS CORRECT, BUT THERE IS NO GUARANTEE THAT THE INFORMATION IS ACCURATE AND COMPLETE. PT ASURANSI JIWA GENERALI INDONESIA SHALL ASSUME NO LIABILITY FOR ANY LOSS ARISING FROM RELIANCE ON IT. PAST PERFORMANCE IS NOT NECESSARILY A GUIDE TO FUTURE PERFORMANCE. THE UNIT PRICE MAY RISE AS WELL AS FALL AND AS SUCH PERFORMANCE CANNOT BE GUARANTEED. POTENTIAL INVESTOR SHOULD CONSULT THEIR FINANCIAL CONSULTANT BEFORE INVESTING.